

CERTIFICATE OF LOCATION OF GOVERNMENT CORNER

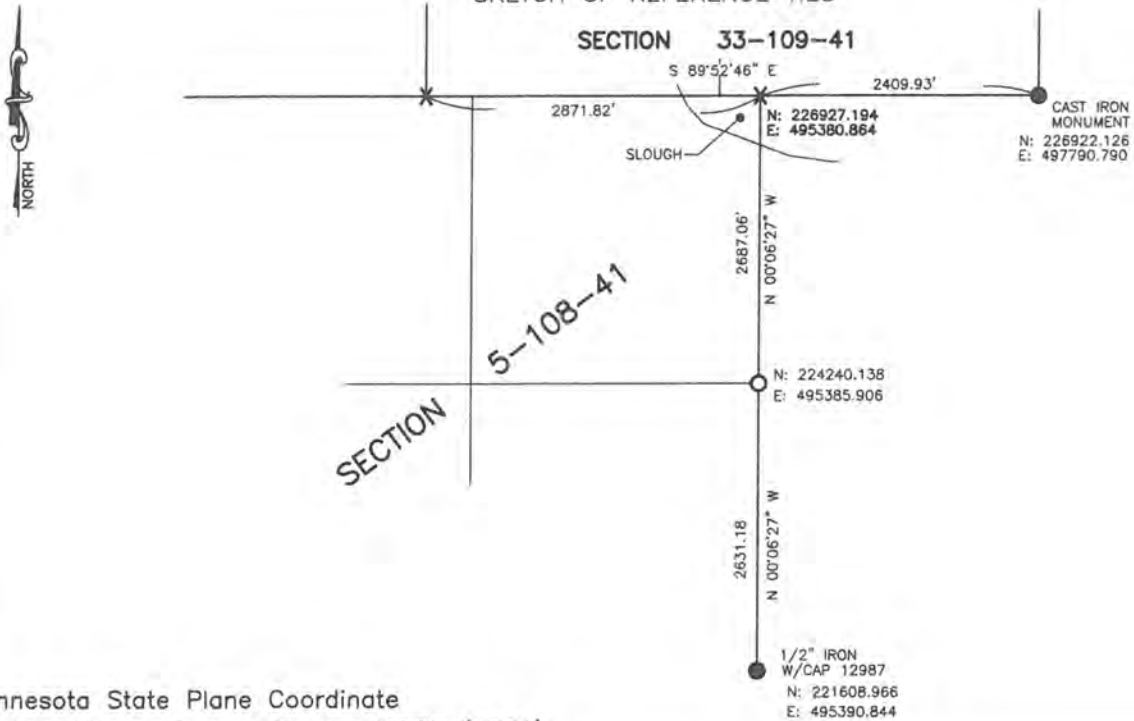
Northeast Corner of Section 5, Township 108, Range 41, 5TH P.M.

STATE OF MINNESOTA, County of Murray

At the corner location shown on the sketch:

- On _____ found a _____
DATE
- left monument as found, lowered monument, removed monument (explain)
- On Jan 10, 2019 placed a Computed position (see statement of evidence)
DATE

SKETCH OF REFERENCE TIES



Minnesota State Plane Coordinate
 System Murray County Datum NAD83 (1996)

Statement of evidence relative to this corner location is on back of page.

I hereby certify that this document and the data contained herein was prepared by me or under my direct supervision.

Daniel L. Buettel 1/22/2019
DATE
 Daniel L. Buettel
 License No. 43844

STATE OF MINNESOTA, }
 COUNTY OF MURRAY, } ss.

I hereby certify that the within instrument was filed in this office for record on the 5TH day of FEBRUARY A.D. 20 19 at 9:00 o'clock A: M, and was duly recorded as Document No. _____

LeeAnn C. Larson
 County Recorder

Statement of Evidence

NE 5-108-41

In 1861, L.M. Fletcher did the original survey of the township.

January 10, 2019, Buetlel-Moseng Land Surveying established by projecting an existing fence along the east line of section 5 north to the standard parallel. Could not place monument, it is in slough.